

 **Pumadur**[®]  **Pumadur**[®]
Uni-Pak

Specialist Polyurethane Flooring Systems

www.resdev.com



Resdev's Pumadur range of high performance polyurethane flooring is designed to exceed the ever changing needs of both the industrial and commercial markets for seamless, hygienic flooring.

In an extensive colour choice encompassing specific requirements including strength, slip and chemical resistance, Pumadur Polyurethane Flooring Systems provide the ideal solution.

From coatings and coving products through to flow applied and heavy duty systems incorporating specialised graded aggregate and fillers, Resdev can provide strong flooring solutions for practical and prestigious installations alike.





Typical Installations are:

- Chemical Processing & Storage
- Food Processing & Manufacture
- Pharmaceutical
- Healthcare
- Cold Storage/Freezers
- Breweries
- Printing
- Heavy Duty Traffic, Plant Vehicle Areas
- Engineering Process Areas
- Production & Warehousing
- Showrooms
- Toilets and Washroom Areas
- Food Preparation Areas
- Laboratories
- Dairy Clean Areas
- Storage Areas
- Plant Rooms
- General Engineering
- Dust-Proofing
- Line Marking/Safety Signage





Pumadur HF/Pumadur RT

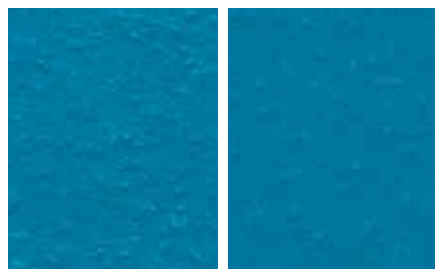
The **Pumadur** range of heavy duty polyurethane flooring systems from Resdev are manufactured to comply with the exacting specification for a seamless surface designed to provide excellent resistance to abrasion, chemical attack and other forms of physical aggression including thermal shock from excessive heat up to 120°C.

Pumadur HF and **Pumadur RT** water-dispersed heavy duty polyurethane floor systems, with graded silica aggregates give a lightly textured profile and matt surface.

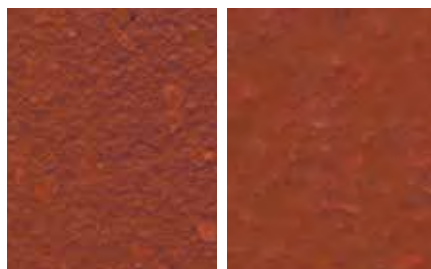
Pumadur RT may be used without a primer on substrates with low porosity as it is resin-rich to enable absorption into the sub-floor.

Pumadur HF and **Pumadur RT** can also withstand the rigours of pressure washing and steam cleaning at a thickness of 9 mm.

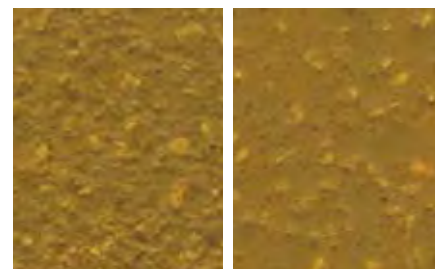
Some colours in some systems can be affected by UV light over time. Non standard colours are available on request. The colours shown may differ from the original product due to reprographic and technological media variations. The same colour in different products may also vary due to the composition and texture of the final finish. If colour and final aesthetics are of concern, please contact us to request an actual sample of the colour and system required.



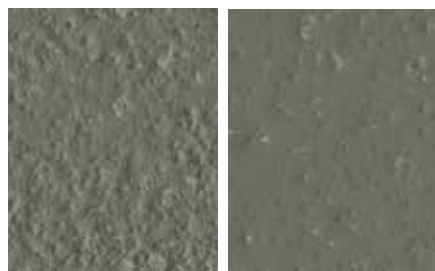
Chelsea Blue
(Available in Uni-Pak)



Red
(Available in Uni-Pak)



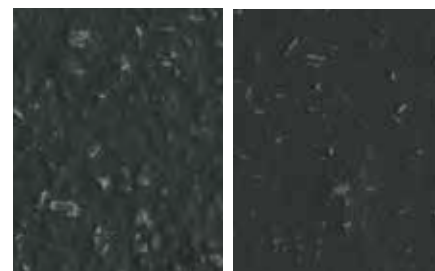
Sahara
(Available in Uni-Pak)



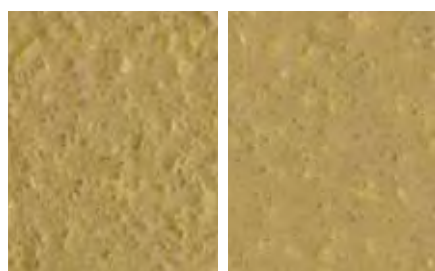
Mid Grey
(Available in Uni-Pak)



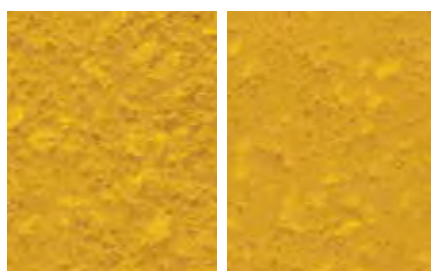
Dark Grey
(Available in Uni-Pak)



Charcoal
(Available in Uni-Pak)



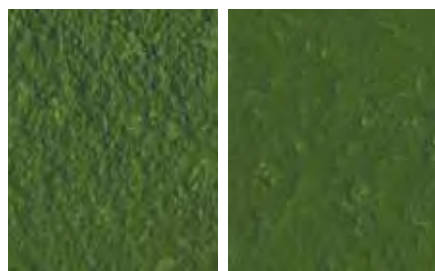
Buff
(Available in Uni-Pak)



Safety Yellow
(Non Standard)



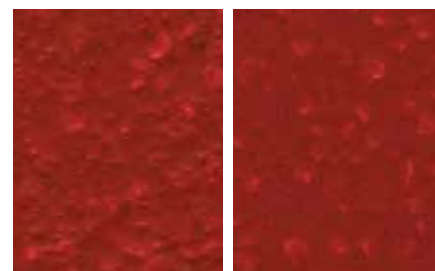
Yellow



Green
(Available in Uni-Pak)



Brown



Safety Red
(Non Standard)

Pumadur MD/Pumadur SL

Resdev's medium duty flow-applied systems are smooth, and attractive as well as offering excellent wear resistance, good cleanability and abrasion qualities.

Pumadur MD is a flow applied system based upon polyurethane technology with a high order of durability, resistance to abrasion, impact, chemical attack and penetration. Its smooth matt finish is the ideal partner for the rigours of heavy duty environments.

Pumadur SL is a durable self-levelling polyurethane flooring system ensuring a smooth matt finish with excellent resistances to abrasion and chemical attack.



Some colors in some systems can be affected by UV light over time. Non standard colors are available on request. The colors shown may differ from the original product due to reprographic and technological media variations. The same color in different products may also vary due to the composition and texture of the final finish. If color and final aesthetics are of concern, please contact us to request an actual sample of the color and system required.



Chelsea Blue
(Available in Uni-Pak)



Red
(Available in Uni-Pak)



Sahara
(Available in Uni-Pak)



Mid Grey
(Available in Uni-Pak)



Dark Grey
(Available in Uni-Pak)



Charcoal
(Available in Uni-Pak)



Buff
(Available in Uni-Pak)



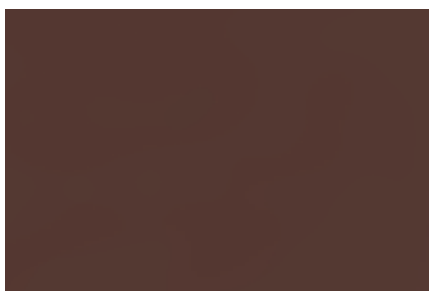
Safety Yellow
(Non Standard)



Yellow



Green
(Available in Uni-Pak)



Brown



Safety Red
(Non Standard)

Pumadur TF/Pumadur CG/ Pumadur WR

Resdev's fully comprehensive range of high performance, polyurethane coating, coving and wall renders are recommended for use in a broad selection of environments.

Pumadur TF is a solvent free high build coating, giving high quality levels of resistance to abrasion, chemical attack and other forms of physical aggression. It is available in a selection of matt colours.

Pumadur CG coving grade and **Pumadur WR** coving/wall render are designed specifically for use with Pumadur Polyurethane Flooring Systems in order to maintain the same standards of resistance to abrasion and chemical contact when used in conjunction with Pumadur TF. This will give a totally seamless 'box' finish floor and wall system for high hygiene sterile process, bund and tanked areas.



Some colours in some systems can be affected by UV light over time. Non standard colours are available on request. The colours shown may differ from the original product due to reprographic and technological media variations. The same colour in different products may also vary due to the composition and texture of the final finish. If colour and final aesthetics are of concern, please contact us to request an actual sample of the colour and system required.



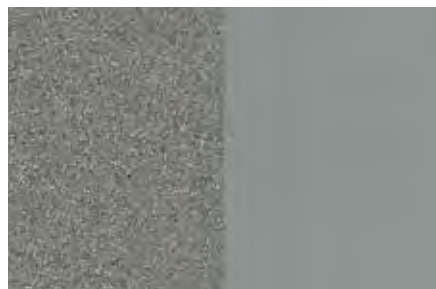
Chelsea Blue
(Available in Uni-Pak)



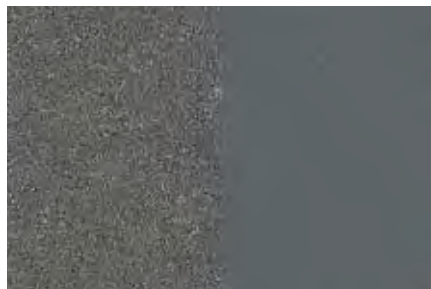
Red
(Available in Uni-Pak)



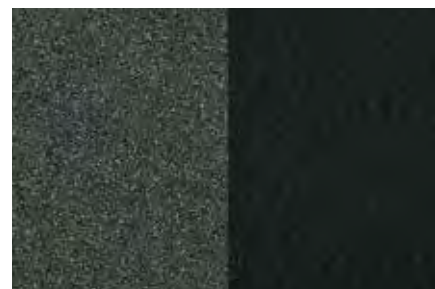
Sahara
(Available in Uni-Pak)



Mid Grey
(Available in Uni-Pak)



Dark Grey
(Available in Uni-Pak)



Charcoal
(Available in Uni-Pak)



Buff
(Available in Uni-Pak)



Safety Yellow
(Non Standard)



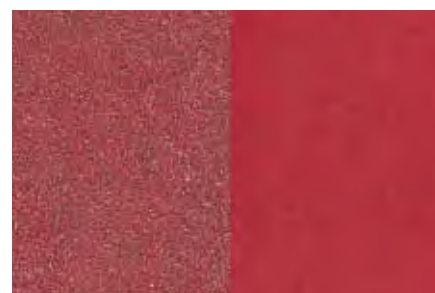
Yellow



Green
(Available in Uni-Pak)



Brown



Safety Red
(Non Standard)

Product	Nominal Thickness (mm)	Appearance Surface Finish	Durability Rating	Temperature Tolerance (max °C)	Slip Resistance Rating (SRV)		Antistatic Pumanistat Grade BS2050	BS 8204 Part 6 & Ferfa Classification	Application Technique
					WET	DRY			
Pumadur HF Pumadur Uni-Pak HF	6 - 9	White flint mottled profiled matt surface	VHD	* 120 (9mm) 70 (6mm)	▲ 60	70	✓	8	Trowel
Pumadur RT Pumadur Uni-Pak RT	6 - 9	White flint mottled profiled matt surface	VHD	* 120 (9mm) 70 (6mm)	50	60	X	8	Rake and trowel
Pumadur MD Pumadur Uni-Pak MD	4 - 6	Smooth matt surface	HD/ VHD	70 (6mm) 60 (4mm)	N/A	55	X	7	Spread and Spiked Roller
Pumadur SL Pumadur Uni-Pak SL	2 - 3	Smooth matt surface	MD/HD	60 (3mm)	N/A	55	✓	5	Spread and Spiked Roller
Pumadur TF 2 coats Pumadur Uni-Pak TF	0.3	Roller applied matt/silk surface	LAD/MD	N/A	N/A	N/A	X	2	Roller or brush
Pumadur CG When coated with Pumadur TF (2 coats) Pumadur Uni-Pak CG	4 - 6	Flat trowelled aggregate finish	N/A	70 (6mm)	N/A	N/A	X	N/A	Trowel
Pumadur WR When coated with Pumadur TF (2 coats) Pumadur Uni-Pak WR	4 - 6	Flat trowelled aggregate finish	N/A	70 (6mm)	N/A	N/A	X	N/A	Trowel
Pumadur DP Pumadur Uni-Pak DP	6 - 9	Profiled finish	HD/VHD	120 (9mm) 70 (6mm)	Varies depending on profile (see TDS)		X	8	Rake, trowel and roller

▲ Results obtained in a controlled laboratory environment

* Occasional not consistent exposure

The durability slip & chemical resistance of a Pumadur Polyurethane Flooring System is directly proportional to the thickness applied and other factors including traffic, mechanical and chemical use, impact damage and housekeeping practices. Protection is offered against a comprehensive range of chemicals though some highly aggressive chemicals may not be suitable in higher percentage strengths.

Durability

LD (Light Duty) - Light foot traffic, occasional rubber tyred vehicles.

MD (Medium Duty) - Regular floor traffic, frequent fork lift truck traffic, occasional hard plastic-wheeled trolleys.

HD (Heavy Duty) - Constant fork lift truck traffic, Hard plastic wheeled trolleys, some impact.

VHD (Very Heavy Duty) - Severe heavily loaded traffic and impact.

The Pumadur range of polyurethane flooring systems can be applied to a wide variety of substrates including concrete and grano concrete and is resistant to chemical attack including:

- organic and inorganic acids
- alkalis
- fuel
- hydraulic oil
- aromatic and aliphatic solvents
- other forms of physical aggression



Resdev is a full manufacturer member of FeRFA, The Resin Flooring Association and the product types are given in accordance with BS 8204 Part 6 and comply with the standards set by the association. Products are categorised into 8 types to represent a class of properties and durability of flooring finish. The different types are appropriate for use in different applications to ensure the best solution every time.

The technical and specification data provided is given as a guide and additional specification and materials safety data is available upon request, further assisted by Resdev's Technical Support Team giving direct access to specialist advice. Working closely with specialist approved flooring contractors our aim is to ensure that each customer is completely satisfied at every stage of the project, interacting with all parties involved to select and install correctly specified floor systems, and including an established after-sales support structure which is second to none.





Q 09073



Resin Development

Pumaflor House, Ainleys Industrial Estate, Elland, West Yorkshire, HX5 9JP, England

tel: +44 (0) 1422 379131 fax: +44 (0) 1422 370943

info@resdev.com www.resdev.com

Registration Number: 1392506

41805

